

# AMF Nodal with External Data – Topology

## Test Configuration:

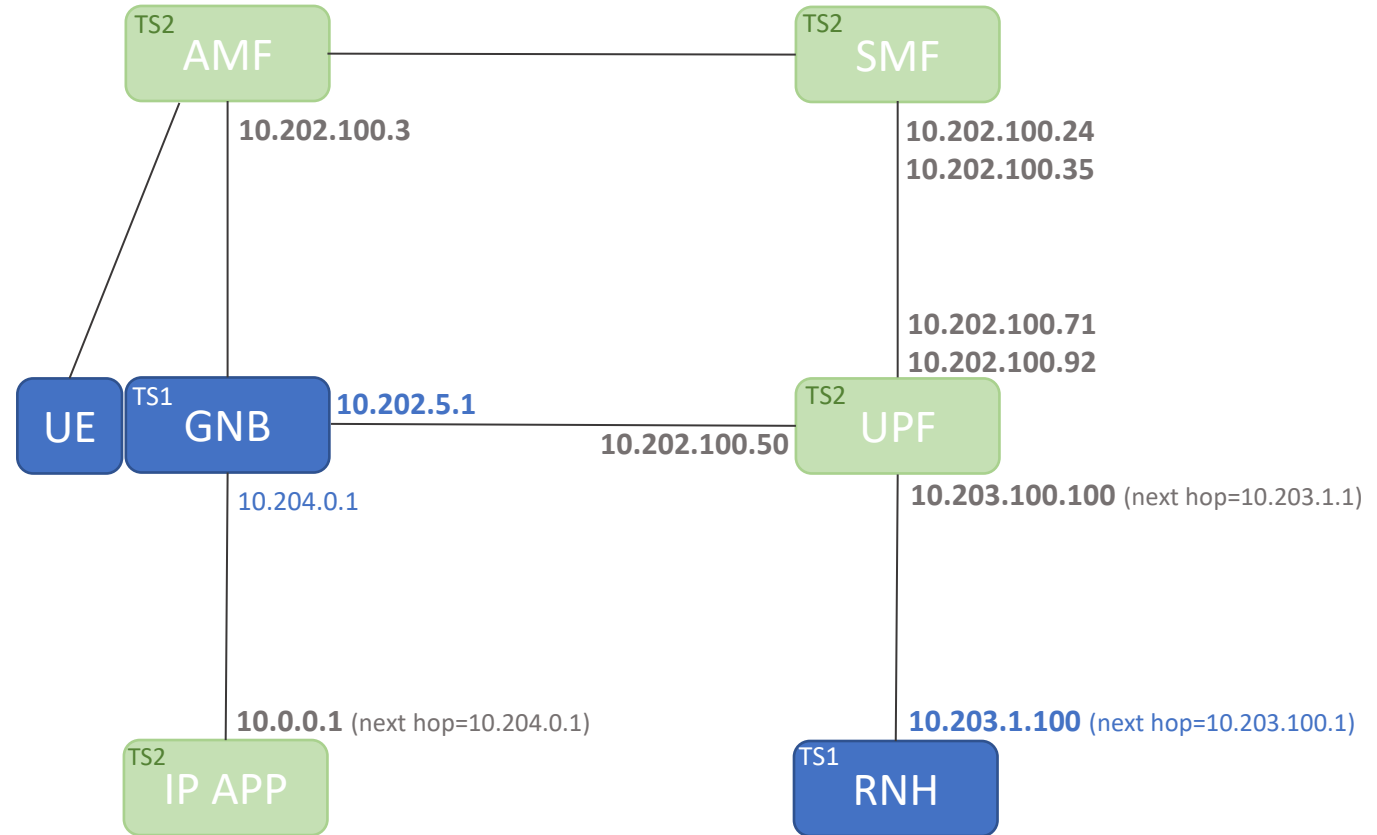
- TS1: AMF Nodal + Remote NH
- TS2: AMF Node + UP Node + IP App Node
- IP APP emulates the External Data Source

## Static route defined on TS1 :

Destination	10.0.0.0
Mask	255.255.0.0
Gateway	10.204.0.1

## IP App Node emulates External Data Source

- UDP data from 10.0.0.1 is received on TS1-eth4 and routed to the RNH via the UPF
- Data from the RNH is routed via the UPF to the GNB
- TS1's static route ensures that any traffic with destination 10.0.0.1 is sent out on eth4

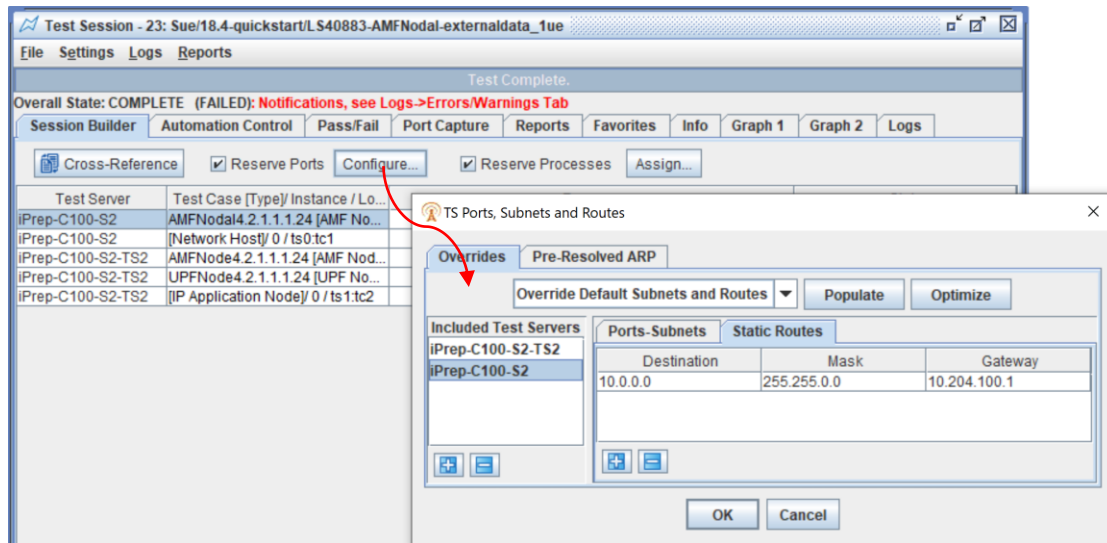


## Test Results:

- Eth4 pcap shows UDP between External Data Source and Remote NH
- Eth3 pcap shows UDP between UPF and Remote NH
- Eth2 pcap shows UDP between GNB and UPF

# AMF Nodal with External Data – Test Configuration

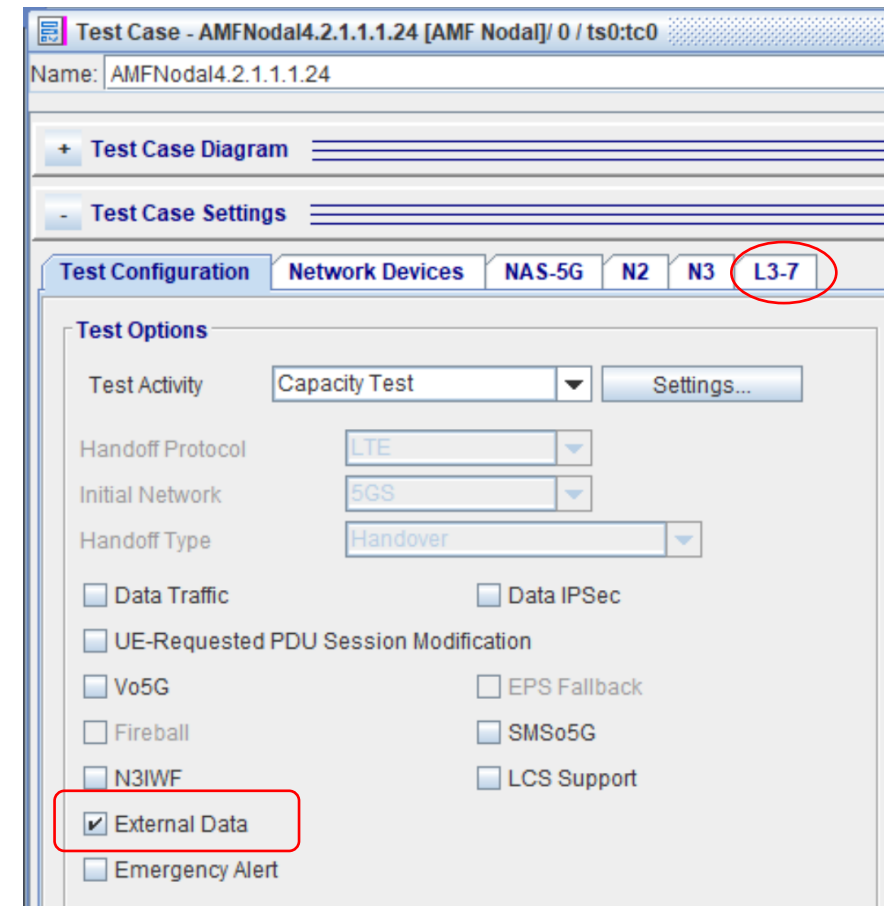
## Step 1: Define Static Route in Port Reservation



### In Port Reservation

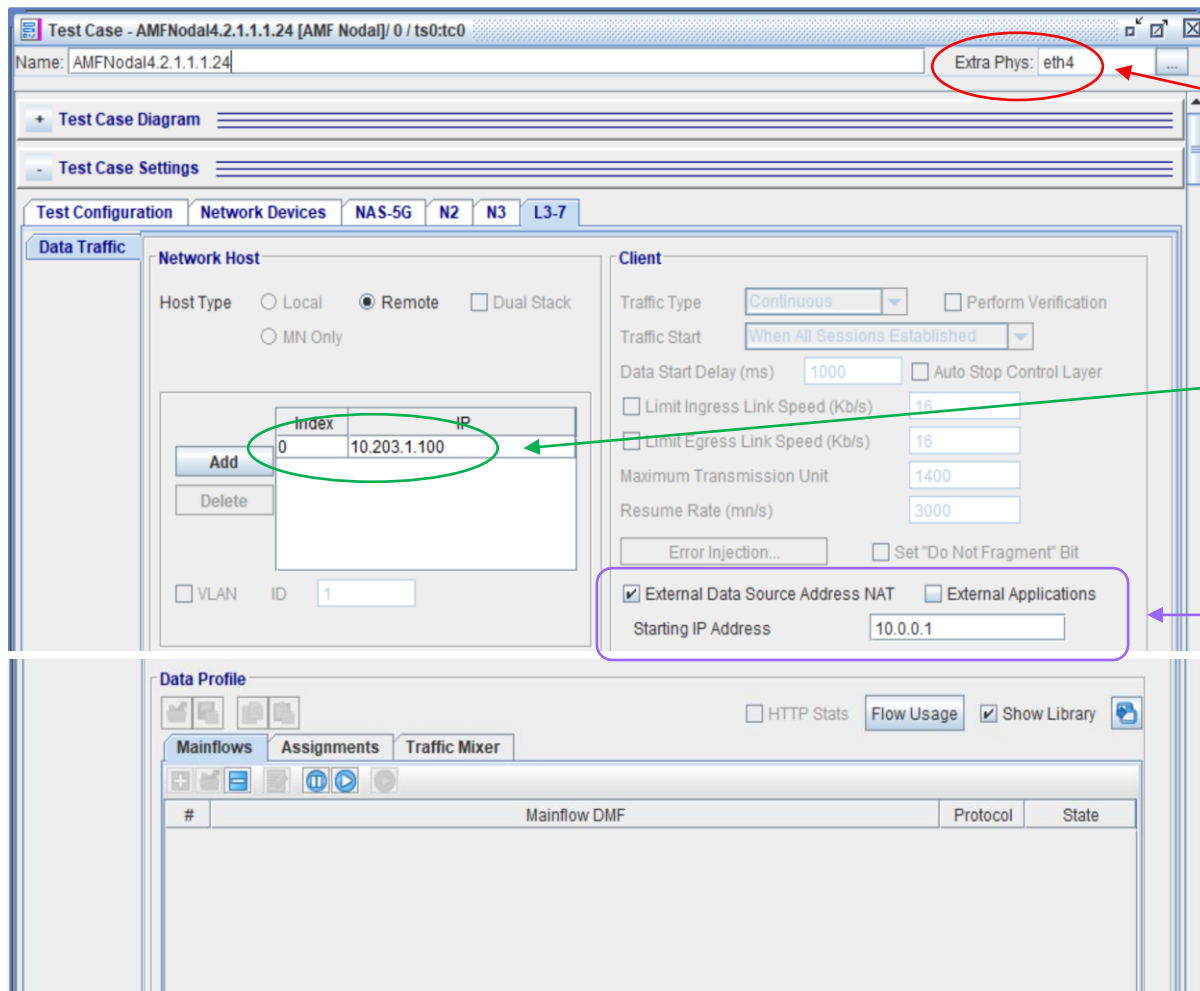
- Configure a Static Route on the TS running AMF Nodal
- Destination = starting IP of the External Data Source
- Gateway = TS Eth port connected to External Data Source

## Step 2: Enable External Data in AMF Nodal



# AMF Nodal with External Data – Test Configuration

## Step 3: Configure L3-7 > Data Traffic



• Configure **Extra Phys** for the TS eth port connected to the External Data Source

• Configure the Remote Network Host IP

• Enable **External Data Source Address NAT**, define starting IP of External Data Source

• Note: if this option is not enabled, the External Data (source IP) **must** match the IP assigned to the Subscribers